

Highlights and new products

Spring 2025

Smart solutions – Data-driven optimisation for best performance

New products

Product launch March / June 2025

TRIDONIC

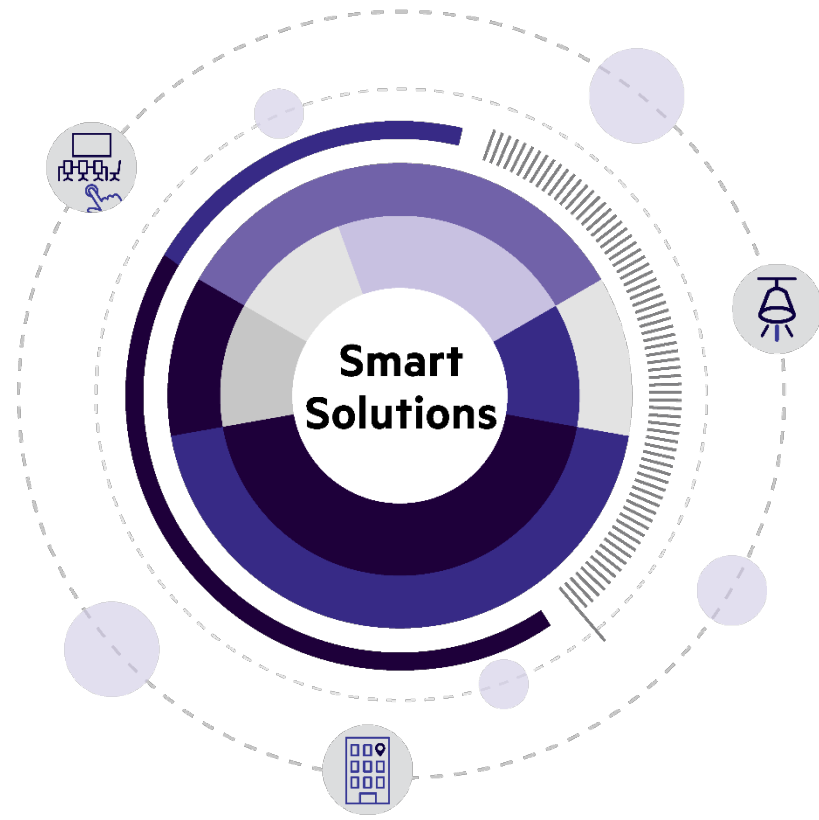


Smart solutions

Data-driven optimisation for your project

Imagine a world where entire buildings can be optimised through digitalisation. Data-driven maintenance planning can reduce electrical waste. Sensors make space management easier than ever: air sensors ensure an ideal indoor climate for higher productivity, while presence sensors visualise building usage. Where poor planning once resulted in overcrowded spaces, data-driven optimisation can now deliver the ideal layout.

Data is the key to the building of the future. With solutions from Tridonic, you get products that do more than just illuminating rooms. Find out more about how you can gain insight into luminaires, rooms and buildings with us as your partner.



Luminaire data for energy efficient lighting

All LED drivers in our latest generation of drivers are equipped with lumDATA, which can be analysed to provide a detailed insight into luminaire usage. Products such as the Lifetime Indicator use this data to help plan future maintenance. If the Lifetime Indicator shows that certain luminaires have a short remaining lifetime, a maintenance appointment can be scheduled well ahead to replace all the affected luminaires at once. Luminaires with a longer lifetime can continue to be used for lighting.

The use of luminaire data can significantly reduce maintenance costs and product costs and optimises the lighting in a building.

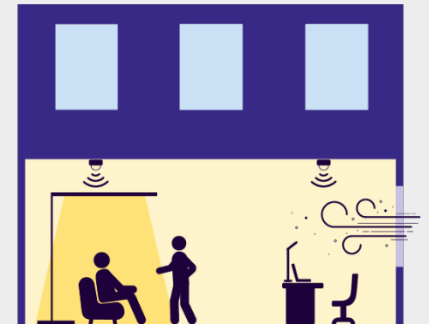
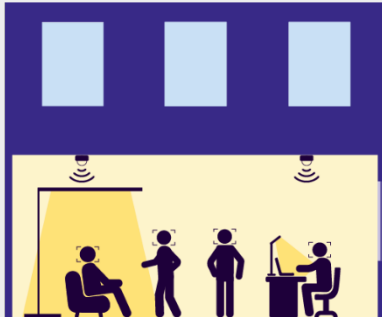


Room data for optimised space planning

With data from our indoor and outdoor sensors, you can gain valuable insight into space usage and make data-driven decisions. Sensors can provide information on space utilisation, occupancy peaks or air and lighting quality.

Using occupancy data helps reduce energy consumption and improves sustainability ratings. In an open-plan office that is hardly used on homeoffice days, the lighting can be programmed to switch on only when presence is detected.

In short, space data improves the efficiency of indoor or outdoor spaces and ensures maximum comfort for employees and customers.



Building data for improved building efficiency

Building data brings together previously collected luminaire and space data to provide the most accurate insight into a building's efficiency.

From luminaires that can save energy by using lighting scenes and automatic control, to location-independent emergency lighting tests and automatic error messages in the event of system failure, to centralised system control, building data provides valuable information on the potential for optimisation in all areas. It can improve energy consumption or be used for space management and maintenance planning.



Your smart partner

Whichever industry you operate in, the performance of your building has a significant impact on the productivity of your people, the running costs of your business, the success of your organisation and the health of our planet.

From smart lights that can extend their life with data, to space management with sensors. As your smart partner, we have a smart solution for everything: enjoy great light while benefiting from the luminaire data collected during use.

Our products can work either as a simple building management system using lighting data, or as an extension to an existing building management system.

[More information >](#)



Indoor lighting | strain-relief LED driver

LED driver flexC / o4a / bdW SR / SR+ EXC4 / PRE4

The fourth generation of strain-relief LED drivers from Tridonic offers simplified installation with improved strain relief and an optional Linect housing. Thanks to the integration of lumDATA and the Lifetime Indicator, you gain valuable insights into your luminaires. You can use this data to make data-based decisions. All information is accessible via the NFC or optionally via the DALI interface.

Available in different power clusters. Choose between the flexible one4all interface, the wireless basicDIM interface or a mains-switchable option with a fixed output.

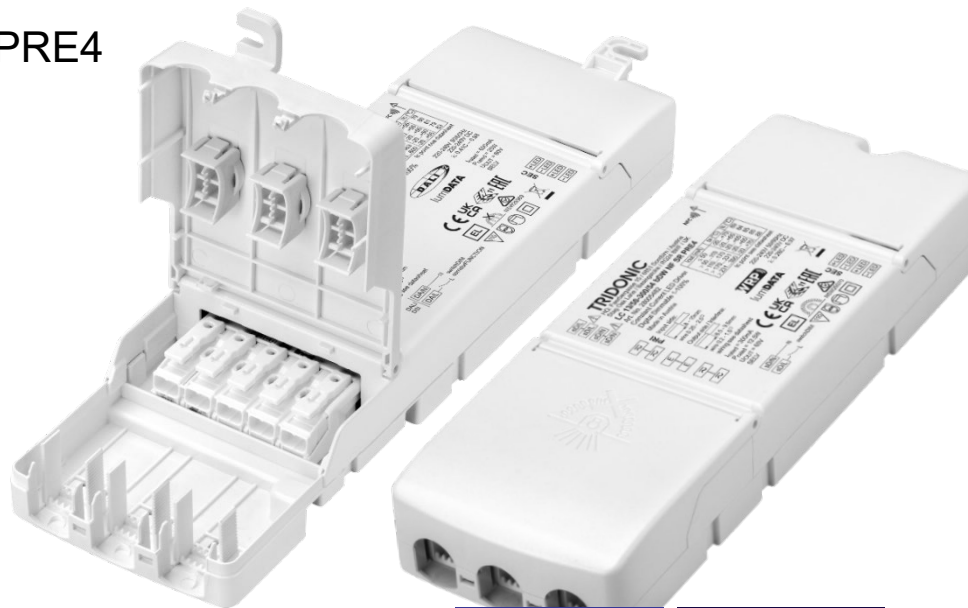
Benefits

- Fast connection interface (Linect) that can be installed by untrained staff, drastically reducing installation time
- New Makrolon® RE housing material for a more sustainable product
- NFC interface for fast and contactless programming and data access

System solution

Independent LED driver to power luminaires such as downlights or panels.

Compatible with the SLE, DLE and QLE portfolio.



LC flexC / o4a / bdW NFC SR / SR+ EXC4 / PRE4

[Weitere Informationen \(flexC\) >](#)

[Weitere Informationen \(o4a\) >](#)

[Weitere Informationen \(bdW\) >](#)

Indoor lighting | Flextapes

LED driver LC 24 V one4all SC EXC2 / LC 24 V Ip EXC2

The second generation of dimmable one4all 24 V LED drivers has received a significant upgrade with DALI-2 certification. The NFC interface for quick and easy programming of the LED drivers supports luminaire production processes and commissioning. The lumDATA function also allows luminaire information, energy consumption data and diagnostic data for fault analysis to be stored and retrieved at any time.

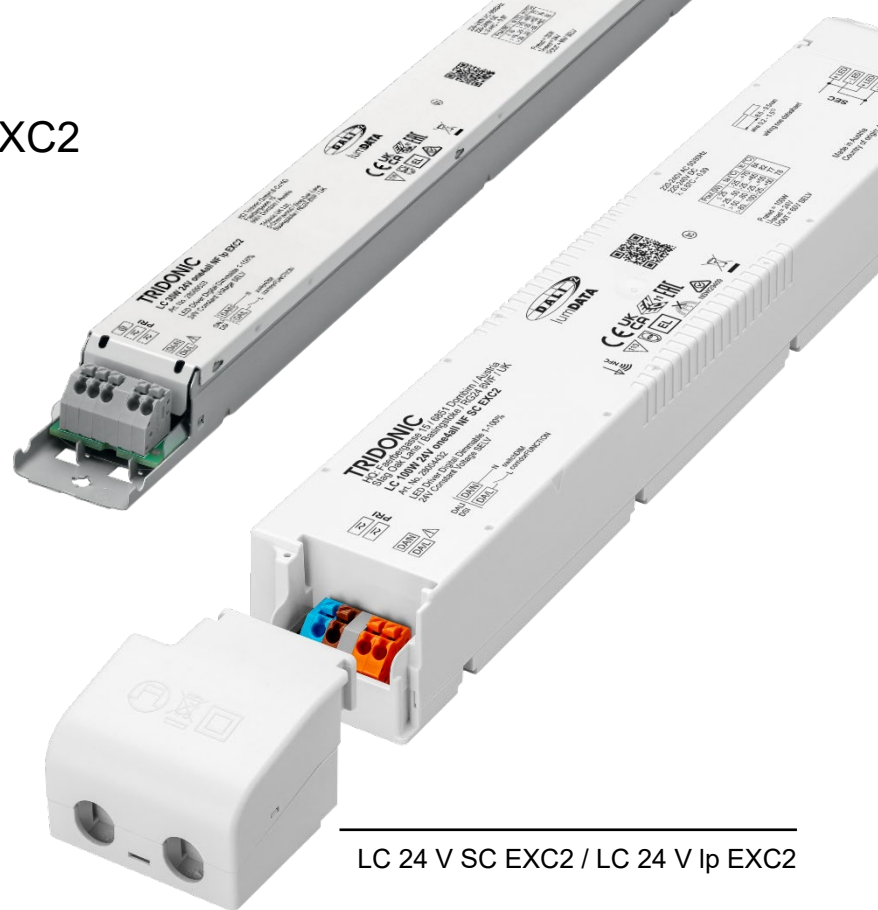
The LED driver is available in 35 W and 60 W in a recessed version. For free-standing installations the LED driver is alternatively available in a robust SC housing in 18 W, 35 W, 60 W, 100 W and 200 W versions.

Benefits

- DALI-2 compatibility
- NFC interface for fast, contactless programming
- lumDATA for energy consumption monitoring and fault diagnosis

System solution

Compatible with the reel2reel LLE FLEX portfolio



LC 24 V SC EXC2 / LC 24 V Ip EXC2

[Weitere Informationen >](#)

Indoor lighting | Flextapes

Accessories

Profiles, covers and mounting accessories complete the reel2reel LLE FLEX portfolio. The complementary accessories facilitate the installation of LED strip lighting in a wide range of applications - from under-cabinet lighting in kitchens, bathrooms and display cabinets to mood lighting in living areas and hotel rooms, to name but a few.

The range includes several profiles for different types of installation, two cover options and a wide range of mounting accessories. All options are listed on the Tridonic website and can be combined in any way.

Benefits

- Full compatibility of the components in the LLE FLEX range
- Wide range of accessories
- All components for LED strip lighting installations from a single source

System solution

Perfectly compatible with the reel2reel LLE FLEX portfolio and matching constant current LED drivers.



System photo
(profile, cover and mounting accessories)

[Weitere Informationen >](#)

Indoor lighting | Linear modules

LLE CRI90 PRE

Our latest portfolio of CRI90 LED modules with KSF phosphor represents a significant advancement in lighting technology. The CRI90 standard KSF phosphor improves the quality of colour rendering, making it ideal for applications where colour accuracy is paramount.

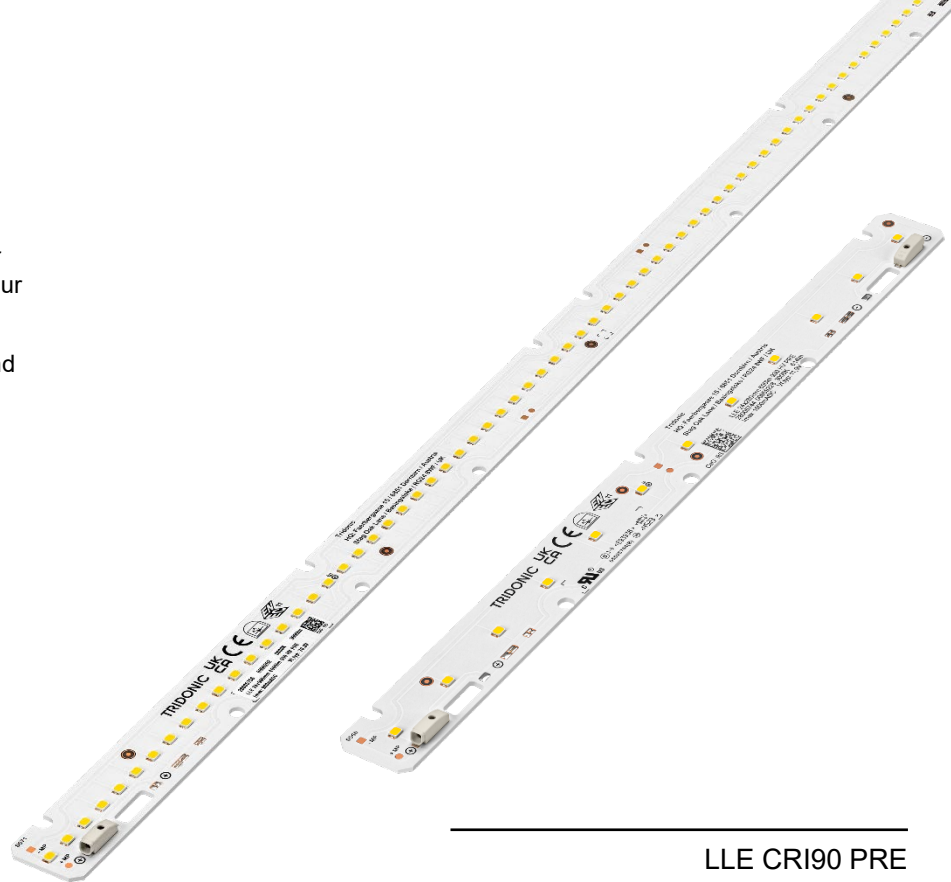
With a choice of three lumen packages (HV 650 lm/ft, 1250 lm/ft and 2000 lm/ft) and two colour temperatures (3000 K, 4000 K), the LED modules can meet a variety of lighting requirements.

Benefits

- High performance with low energy consumption
- Long life of 102,000 hours
- Reduced maintenance and replacement costs

System solution

You can find an efficient driver module combination in the Tridonic [Setbuilder >](#)
Linear LED covers, 24 mm lenses and end caps complete the solution.



LLE CRI90 PRE

[Weitere Informationen >](#)

Outdoor lighting | Control components

ID ECCO Smart

Our new ECCO Smart makes it even easier to customise your street lighting. CLO and chronoSTEP profiles, such as changing light scenes in the summer or winter months, can be customised with just one click using a pre-defined QR code. For mass production, non-configured products can be stored and configured quickly and easily after ordering.

Benefits

- Fast customisation of the CLO or chronoSTEP profile for outdoor lighting
- Fast configuration and delivery of pre-produced luminaires
- Efficient production without intermediate steps: ECCO Smart allows one-click installation

System solution

The ID ECCO Smart is ideal for use with the Fast Programming Tag.



ID ECCO Smart 2D-TR

[Weitere Informationen >](#)

Lighting controls | Control components

sceneCOM evo Touchpanel

The sceneCOM evo Touchpanel is a user-friendly, wall-mounted solution for using sceneCOM evo. The touch panel features a 7-inch multi-touch panel, a digital wizard to help with initial setup and automatic reconnection to your sceneCOM evo system after a restart.

Benefits

- 7" multi-touch panel adds to sceneCOM portfolio
- High-end control: Capable of controlling a complete sceneCOM evo installation (from 1 to 5 controllers)
- Kiosk mode: Browser automatically launches the pre-configured sceneCOM evo website

System solution

Can be used with the sceneCOM evo controller and all other relevant sceneCOM evo compatible devices.



sceneCOM evo Touchpanel

[Weitere Informationen >](#)

Lighting controls | Software & apps

lichtMONITOR dashboard only x20

Our new lichtMONITOR dashboard only x20 software replaces the em-LINK V3 software for emergency lighting monitoring.

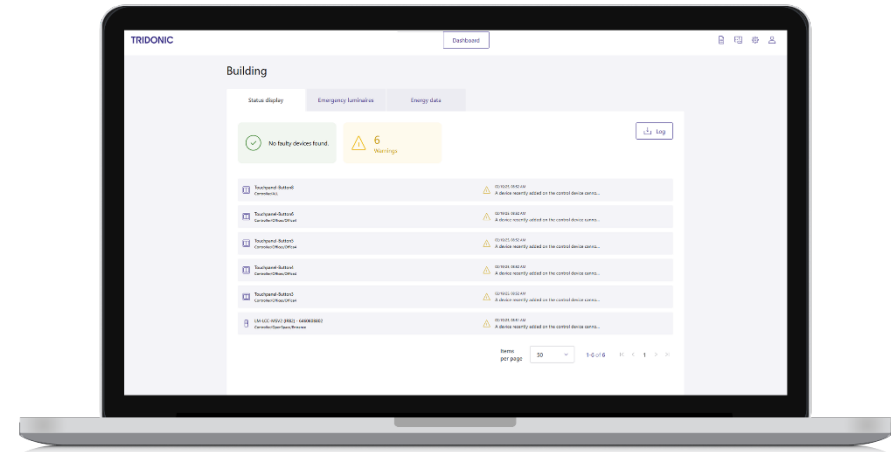
The lichtMONITOR dashboard only licence allows you to connect up to 20 sceneCOM control units and display them in a simplified view. The dashboard can be used to install, control and monitor your emergency lighting. It is available either as a stand-alone software or in conjunction with the lichtMONITOR standard licence.

Benefits

- Cost-effective alternative to lichtMONITOR
- Dashboard provides an overview of the entire lighting installation

System solution

lichtMONITOR is the ideal monitoring tool for sceneCOM installations.



lichtMONITOR dashboard only x20

[Weitere Informationen >](#)

Lighting controls | Software & apps

sceneCOM S scheduler

The “scheduler” is an extension to Tridonic's sceneCOM S application. The scheduler can be used to predefine schedules, conditions and individual triggers to improve the automatic control of the lighting installation.

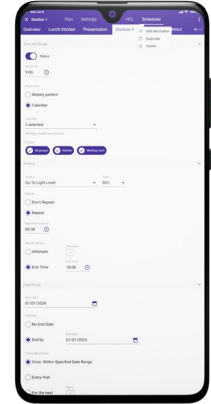
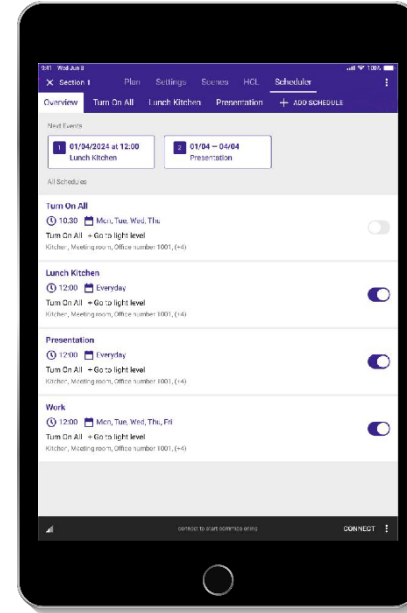
Up to 24 light settings can be stored in the Commissioning App and imported directly into sceneCOM S. These can be stored as times, conditions and individual triggers. These can be stored as automatic switch-off times or different dimming levels for different seasons.

Benefits

- Ideal for repetitive light settings
- Easy setting of lighting scenes

System solution

sceneCOM S is Tridonic's control solution for smaller applications such as rooms or floors.



sceneCOM S scheduler

[Weitere Informationen >](#)

Product preview

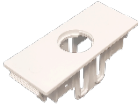
Product preview



falcoSENSE
Real-time room analysis
sensor



airASPECT
cost-effective air quality
sensor



Zhaga Book 20
range extension



DLA flat ready2apply
Ceiling module for low
installation height



4service NFC mobile App

- chronoSTEP3 v2 Support
- New Function CLO and eCLO
- New Function DC Level
- New Feature In-App banner
- Bug fixing, improvements

lichtMONITOR server x5
Monitoring the sceneCOM
evo system



Emergency ready2apply 68mm
Extended area of application
(e.g. wet rooms)

TRIDONIC

WE MANAGE LIGHT

Headquarters

Tridonic GmbH & Co KG
Färbergasse 15 | 6851 Dornbirn, Austria
T +43 5572 395-0 | sales@tridonic.com
www.tridonic.com