

welight

powered by

TRIDONIC

HIGH QUALITY

CRI >90

5-YEAR WARRANTY

FLEXIBLE

DALI / WIRELESS

DESIGNED IN EU



**DOWNLIGHT DIM2WARM WITH LED DRIVERS
AND LIGHTING CONTROLS FROM WLK**

WLK

LEDengine Mini DIM2WARM

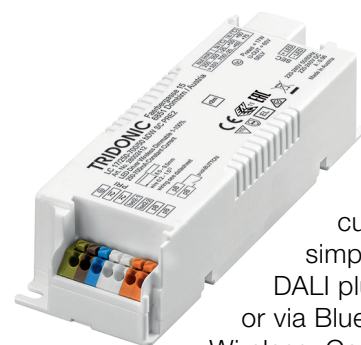
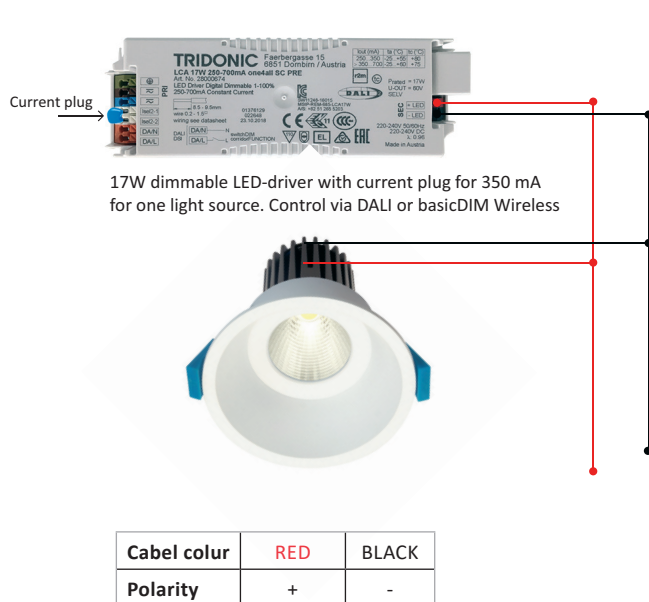
Professional LED downlight 350 mA with Tridonic LED in warm white performance (2700 K, Ra>97) which becomes warmer when dimmed (2700 till 1800 K) but still maintains a high CRI>90. As close to incandescent light as possible. Wide variety of light distributions 20°, 38° and 60°. Perfect alternative to 12V halogen reflector lamps. By combining LEDengine with housing in the same series and a suitable LED driver you'll get a complete luminaire suited for most lighting applications in professional and high-end domestic environments.

- High CRI>90. Narrow colour tolerance MacAdam SDCM 3
- Pre-mounted 2-meter connection cable with built-in strain relief
- 5-year warranty

LEDengine Mini is also available in versions with fixed warm white colour 2700 K.

Wiring

Each LEDengine is delivered with a 2-meter color coded connection cable 2 x 0,5 mm². The connection cable can be cut to desired length, but do not extend the length between the LEDengine and the driver beyond 2 meters as this may result in voltage drop and EMC interference. Connect up till 3 DIM2WARM LEDengine (parallel connection) to the same driver. For more mounting instructions, see the data sheet.



Dimmable constant current LED driver with simple digital control via DALI plus a rotary dimmer or via Bluetooth with basicDIM Wireless. Compact design for narrow installations with optional strain-relief for remote installation.

- Different versions of strain-relief available
- Dimming from 1 to 100%
- Protection IP20
- 5 year warranty
- Life time 100 000 h

The 45W driver can also be used with 2 or 3 light sources in parallel connection in combination with the appropriate current plug. For these alternatives see the data sheet.

Description	Article number	Luminous flux/Moun-ting/Ceiling cutout	Colur temp. / Interface / Colour	Max. current/ Output current
LEDengine Mini Downlight L DIM2WARM 20°	W8203-918-927-20	1000 lm	1800-2700 K	350 mA
LEDengine Mini Downlight L DIM2WARM 38°	W8203-918-927-38	1000 lm	1800-2700 K	350 mA
LEDengine Mini Downlight L DIM2WARM 60°	W8203-918-927-60	1000 lm	1800-2700 K	350 mA
Driver LCA 17W 250-700mA one4all SC PRE	28000674	Built-in/Remote	DALI one4all/r2m	250-700 mA
Driver LC 17/250-700/50 bDW SC PRE2	28002412	Built-in/Remote	bDW/ready2mains	250-700 mA
Current plug I-SELECT 2 PLUG 350mA BL	28001110	Plug-in	Blue	350 mA
LEDengine Mini Housing Deep	W8205	90 mm	White	

To order, go to our webshop www.wlk.eu. There we have also created a few complete kits with dim2warm light source, housing and appropriate LED driver for easier ordering. One KIT is delivered in its own box.



DALI DT6 Rotary Dimmer

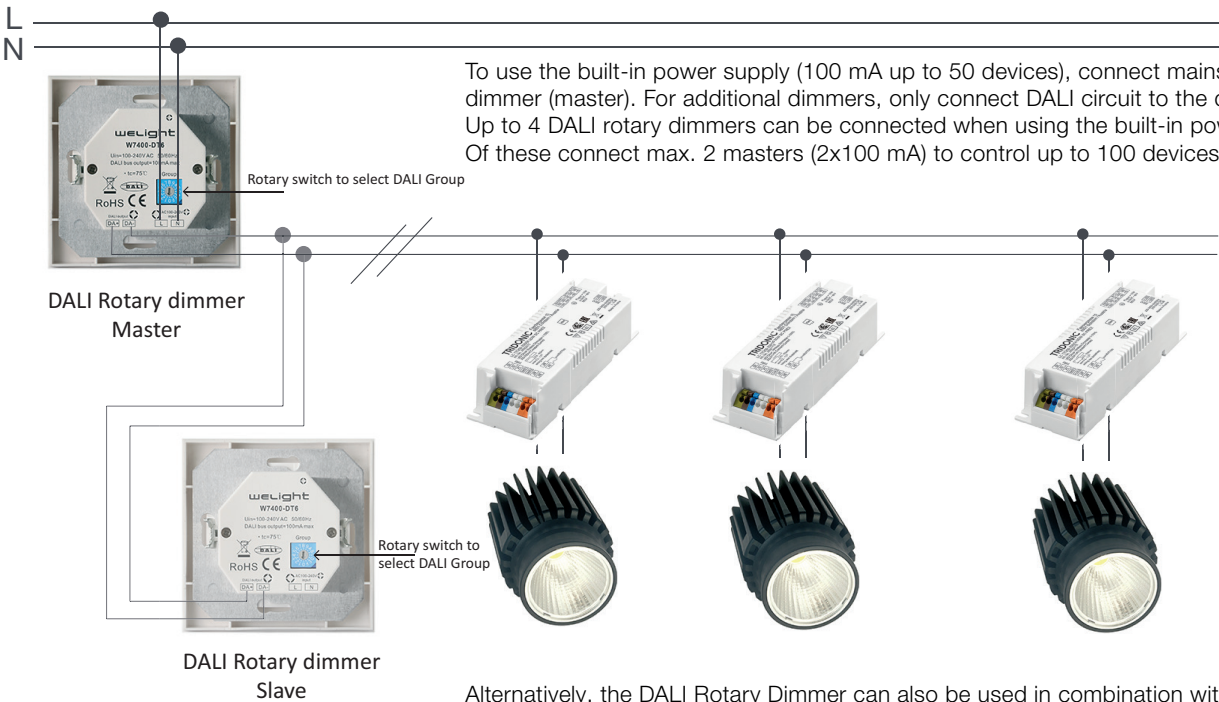
Flush-mounted DALI Rotary Dimmer with built-in power supply in DALI DT6 version with intuitive dimming.

DALI Group selector to allow flexible and easy control. The DALI Rotary Dimmer can control 50 DALI devices and it is possible to extend to max. 100 DALI devices when combining 2-4 dimmers on the same circuit.

- 100-240 VAC
- 2 W
- IP20
- 5 year warranty
- Supports DALI Master- and Slave-mode
- Compatible with Exxact™ frames
- Ambient temperature t_a -5...45 °C

Wiring

DALI Rotary Dimmer can be used as a stand alone solution with the built-in DALI power supply (max. 100 mA). For more mounting instructions, see the data sheet.



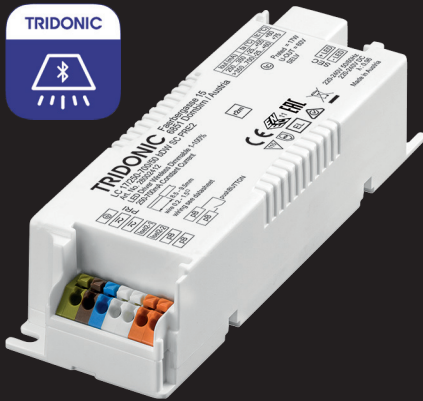
To use the built-in power supply (100 mA up to 50 devices), connect mains to the rotary dimmer (master). For additional dimmers, only connect DALI circuit to the dimmer (slave). Up to 4 DALI rotary dimmers can be connected when using the built-in power supply. Of these connect max. 2 masters (2x100 mA) to control up to 100 devices.

Alternatively, the DALI Rotary Dimmer can also be used in combination with an external DALI power supply in an existing DALI circuit, then only connect the DALI circuit to the rotary dimmers (Slave).

Each rotary dimmer has a rotary switch on the backside to select which DALI group to control with the actual rotary dimmer. The default position is 0 and then rotary dimmer send DALI broadcast commands.

Description	Article number	Function	Control signal	Max. current / Output current
DALI Rotary Dimmer 230VAC 100mA DT6 Rio	W7400-DT6	DT6 rotary dimmer	DALI	100 mA
Driver LCA 17W 250-700mA one4all SC PRE	28000674	In-built/Remote	DALI one4all/ ready2mains	250-700 mA
Driver LCA 45W 500-1400mA one4all SC PRE	28000676	In-built/Remote	DALI one4all/ ready2mains	500-1400 mA
ACU SC 15x43x30mm CLIP-ON SR PA	28001574	Optional strain-relief		

DALI Rotary Dimmer is also available in a DT8 TW version with CCT-control (for dimming and to change the colour temperature), to be used with DT8 light sources which supports Tunable White.



*Tridonic basicDIM Wireless
is compatible with Casambi.

LED driver with control via bluetooth

basicDIM Wireless has a flexible and wireless communication with luminaires and lighting control via Bluetooth, without the need for extra wiring. With the latest Bluetooth built-in drivers from Tridonic* the lighting can be controlled wirelessly using the app 4 remote BT or via the User Interface device with push buttons. Up to 127 units can be controlled in a Bluetooth mesh network. Groups and light scenes can be created, schedules can be added via an integrated clock and calendar, light control is possible between 1–100% and it is also possible to set the colour temperature (TW-Tunable White).

basicDIM Wireless (bDW) - remote control via Bluetooth



App 4remote BT for control via Bluetooth

- Automatically detects the luminaires which is switched on
- Define properties for luminaires and assign these wirelessly
- Programme, assign addresses and create groups
- Switch on/off luminaires and dim them individually or together as a group
- Adjust the light colour and colour temperatures
- Create and call up preferred light settings
- Create scheduled control events based on time, sunrise, sunset
- Automated control with bDW PIR and Daylight sensor
- Manual control of the light from a standard push button with bDW module
- Select specific luminaires quickly using a graphic display of the room or the gallery view



User Interface basicDIM Wireless

- Battery powered, wireless wall switch for control of all wireless basicDIM units
- 4 scenes possible
- Dim up / down and control colour temperatures

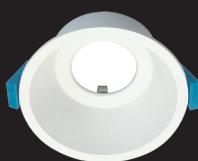
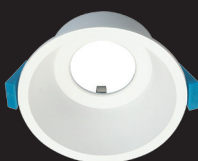
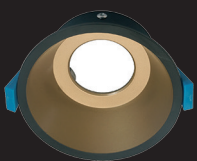
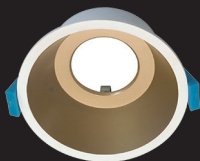
Description	Article number	Interface / Wireless range / Detection range	Output current / Colour	Output power
Driver LC 17/250-700/50 bDW SC PRE2	28002412	basicDIM Wireless/ready2mains	250-700 mA	17 W
Driver LC 45/500-1400/50 bDW SC PRE2	28002414	basicDIM Wireless/ready2mains	500-1400 mA	45 W
User Interface basicDIM Wireless	28002420	Up to 60 m (open air)	White	+ 4 dBm
User Interface basicDIM Wireless	28002213	Up to 60 m (open air)	Black	+ 4 dBm
basicDIM Wireless Sensor 5DP 38rc	28002801	ø 8 m if mounted at height of 3 m	White	+ 4 dBm
basicDIM Wireless module	28002212	Standalone DALI (compatible)	White	+ 4 dBm

basicDIM Wireless drivers are available in several versions for constant current and constant voltage 24 V or as Tunable White for use together with light sources that supports Tunable White.

Housing

With the well-designed housings from Welight you can create professional lighting applications with high colour quality by combining them with LEDengine in the same series.
Click-to-fit housings for the possibility to combine them with any LEDengine version.

- IP44 housing for bathrooms, showers, spa-areas and for outdoor eaves & cornices
- Adjustable housing with 30° swivel.
- Deep housing with low glare cut off UGR ≤ 19



Deep

Description	W8205-WG Deep Gold	W8205-BG Deep Black Gold	W8205 Deep	W8205-IP44 Deep IP44
Article number	W8205-WG	W8205-BG	W8205	W8205-IP44
Ceiling Cut-out	90 mm	90 mm	90 mm	90 mm



Adjustable

Description	W8210 Adjustable	W8206 Adjustable Large	W8211 Adjustable Deep	W8205-W-A Deep Adjustable
Article number	W8210	W8206	W8211	W8205-W-A
Ceiling Cut-out	70 mm	90 mm	80 mm	90 mm



Square

Description	W8212 Square	W8214 Square Adjustable
Article number	W8212	W8214
Ceiling Cut-out	90 mm	90x90 mm

The Square housing is also available for two or three light sources.
An IP44 version for one light source is also available, for bathrooms or outdoor use.

Tridonic and Welight is distributed by WLK – Wennerström Ljuskontroll AB

WLK are a tech sales company specialised in lighting components, systems solutions for control and monitoring. With advanced LED solutions and digital components from Europe's leading manufacturers, we create environmentally friendly and energy-efficient lighting solutions for single rooms to entire properties. We are general agent for Tridonic in the Nordics and Baltics and our main customer segment is manufacturers of luminaires, electrical wholesalers, electrical contractors and property owners.

Welight is a pure product development company that develops and produces products to complement our product range from Tridonic. The product portfolio includes LEDtape, LEDengine, LEDline, LEDdriver, LEDdownlight and LEDdimmer for professional lighting.

For more information and to download data sheets visit www.wlk.eu.

Tridonic develop and manufacture lighting solutions for professional lighting such as LED modules, drivers and ballasts for fluorescent light sources, emergency lighting devices and digital lighting control.

Our goal is to deliver the best products, with a focus on high quality.

WLK – Wennerström Ljuskontroll AB
Jan Inghes Torg 34
SE-120 71 Stockholm, Sweden

+46 (0) 152 910 00
info@wlk.eu

