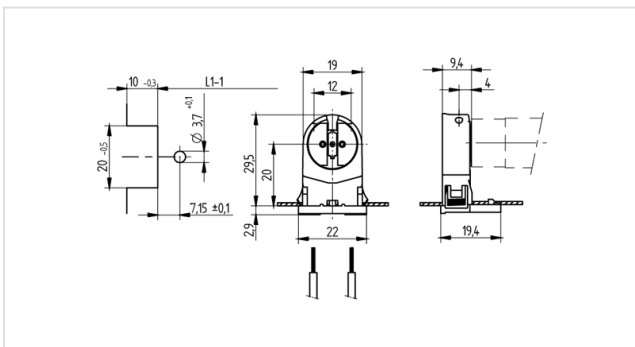





Technik für Licht
Komponenten · Optik · Automation

26.620.2005

Linear Fluorescent Lampholders: General Applications
G5 (T5): Push-Through Lampholders



Color: weiß
FC: 50
Part no.: 26.620.2005.50


0,5 - 1,0 mm²



T 130

Tm 110




0,5 - 1,5

Description

- For cut-outs open at the rear: 10 x 20 mm
-
- A pair of lampholders provides a lamp length tolerance compensation of 2 mm

Symbol value:	18 AWG 0.5 - 1.0 mm ²
Product name:	Fluorescent lampholder G5
LED type:	G5
Farbe:	white
Mounting method 1:	Push through mount
Material:	Housing: PC Rotor: PBT
Rotor:	with
cULus file no.:	E-92235
Weight:	3
Approval:	cULus
Front Test:	yes
Locating pin:	yes
Lamp center:	20
Material thickness:	0.5 - 1.5
T-Marking:	130
Top Test:	yes
Pkg.:	1000