 Create pdf

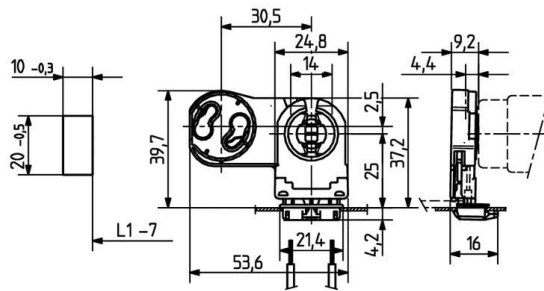
## Lampholders and starter holders

26.306.5025

G13 Push in lampholders



colour	pkg.	wt.	part no.
white	500	8 g	26.306.5025.50



L1-7: Recommended dimension - The distance between the cut-outs and the tolerance should be governed by the dimensions of the respective lamps and luminaires.

With starter holder

Approval: additional cULus (660W /600V)

Wiring: via snap in foot








Lamp centre: 25 mm

Snap in foot 10 x 20 mm

Housing: PC

Rotor: PBT

- A pair of lampholders provides a lamp length tolerance compensation of 3 mm

T 130	Tm 110	U out 500 V					 18 AWG 0.5 - 1.0 mm <sup>2</sup>	 0.5 - 1.1	
-------	--------	----------------	---	---	---	---	--	--	---

Document generated on: Fr, 3. February 2017 - 11:01