

 Create pdf

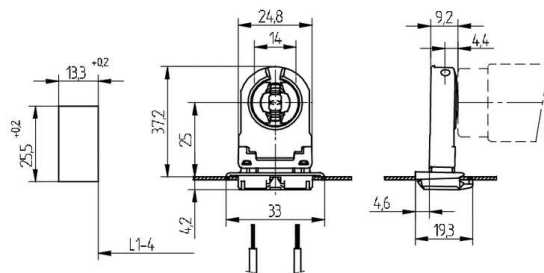
Lampholders and starter holders

26.306.1125

G13 Push in lampholders



colour	pkg.	wt.	part no.
white	500	5 g	26.306.1125.50



L1-4: Recommended dimension - The distance between the cut-outs and the tolerance should be governed by the dimensions of the respective lamps and luminaires.






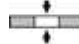

Approval: additional cULus (660W /600V)

Wiring: via snap in foot

Lamp centre: 25 mm
Snap in foot 25.5 x 13.3 mm

Housing: PC
Rotor: PBT

- A pair of lampholders provides a lamp length tolerance compensation of 3 mm

T 130	Tm 110	U out 500 V					 18 AWG 0.5 - 1.0 mm ²	 0.5 - 1.1	
-------	--------	----------------	---	---	---	---	--	--	---

Document generated on: Fr, 3. February 2017 - 11:00