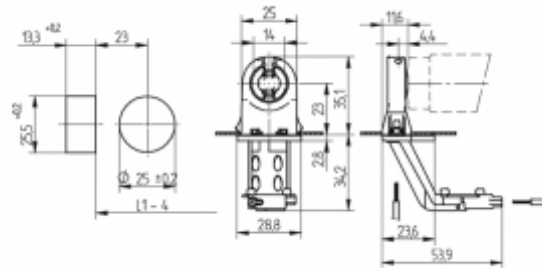


Lampholders and starter holders

26.290.5412

G13 Push through lampholders



L1-4: Recommended dimension - The distance between the cut-outs and the tolerance should be governed by the dimensions of the respective lamps and luminaires.

colour	pkg.	wt.	part no.
white	250	9 g	26.290.5412.50

With starter holder

Approval: additional cULus (660W /600V)

Lamp centre: 23 mm

Push fixing

Housing: PC

Rotor: PBT

- For enclosed cut-outs
- A pair of lampholders provides a lamp length tolerance compensation of 3 mm